



Louisiana Accident & Injury Care

Clinic: 403 N. 6th St., Suite 8-9, W. Monroe LA 71291 Radiology: 410 N. 7th St., W. Monroe
LA 71291

p: 318.303.6142 f: 318.855.4912

www.laaccidentinjury.com

laaccidentinjury@gmail.com

SPINAL LIGAMENT INJURY ANALYSIS

Spinal ligament injuries are often overlooked. Spinal Ligament Injury Analysis, most commonly known as Computerized Radiographic Motion Analysis or CRMA, is a diagnostic test that identifies AOMSI aka Alteration of Motion Segment Integrity. AOMSI one of the highest rated and "severe" accident injuries recognized by the AMA Guides to Permanent Impairment yet often the most overlooked.

The human spine contains 220 ligaments and 23 disc. It is virtually impossible to injure a disc without injuring the ligaments that hold the two vertebrae surrounding the disc together. The damage to these ligaments results in spinal instability or a loss of spinal integrity. The human eye cannot detect its presence leading to it being missed the majority of the time. Specialized medical software must be used in detecting its presence.

AOMSI can be caused by a number of things, including:

- **Increased motion:** Also known as hypermobility, this can be caused by a sudden impact injury that overcomes the ligament's elasticity.
- **Decreased motion:** This can be caused by a spinal fusion, healed fracture, or infection.
- **Trauma to the spine:** AOMSI is considered one of the most severe types of accident injuries, especially when it occurs in the spine.

AOMSI can cause chronic neck or back pain, headaches, dizziness, and referred pain to the arm or leg. It can also lead to spinal instability, which can cause motor deficits and sensory disturbances, and spinal degeneration.

AOMSI is assessed using stress radiographs, such as flexion and extension studies of the spinal region(s). The American Medical Association (AMA) defines AOMSI as:

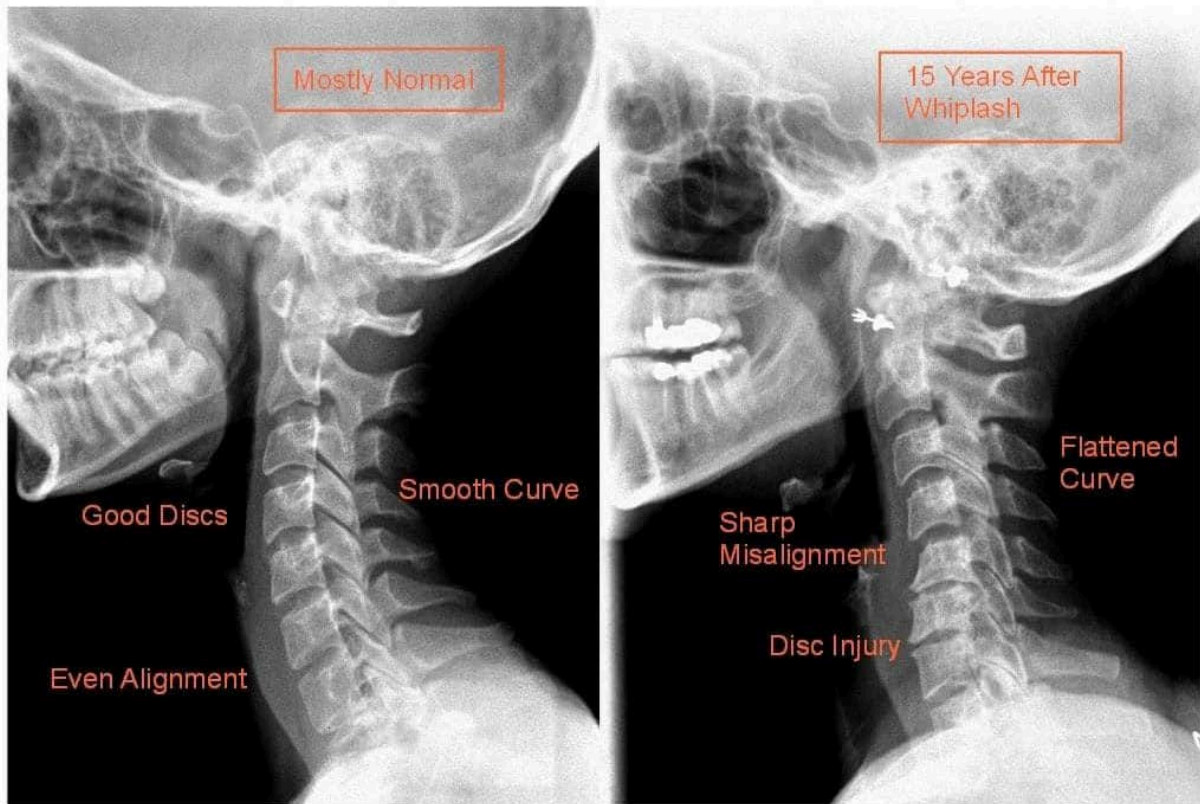
- **Abnormal Anteroposterior (Translational) motion**
- **Abnormal Angular motion**

If you have been injured in an accident and are looking for answers to origin of your pain, consider a Computerized Radiographic Motion Analysis (CRMA). We perform this analysis by

Primary Spine Care | Auto Injuries | Work Injuries | Occupational Medicine

obtaining specific motion stressed flexion-extension views of the cervical and lumbar spine and analyzing them via our specialized software. AOMSI is not detectable to the naked eye and most medical practices are not knowledgeable of the condition often leading to a missed diagnosis and lack of treatment.

Left untreated, spinal ligament injuries can lead to adverse permanent health conditions and changes in lifestyle.



We are trained to locate and treat spinal conditions such as this that many times go undetected.

CRMA is non-invasive, and the patient does not have to be present as the analysis is performed on the X-Ray images themselves. All we need are the most recent flexion and extension X-Rays of the spinal region(s), which may be taken by us or at any qualified imaging facility, and some minimal paperwork completed.

If you or someone you know has been injured in an accident, contact us today for a CRMA at 318.303.6142.